

UniFlow[®] SE FM Floor Mount (Walk-In) Fume Hoods

UniFlow SE FM Floor Mounted (Walk-In) hoods are ideally suited for synthesis and other rack type operations where tall apparatus is used or equipment is rolled into the work area. In widths 48", 60", 72", 96", 120" & 144" & depths of 30", 36", and 48". UniFlow Walk-In hoods are available in standard or special sizes to meet various applications. Modular construction can be shipped disassembled for on-site assembly.



UniFlow Superstructure to be non-metallic FRP composite construction for total chemical resistance (**NO RUST**), superior durability and long life. Interior fume chamber to be glass-smooth with Vector Baffle System & bell shaped exhaust collar. Modular construction reduces weight for ease of installation. Includes 5 year warranty.

UniFlow AireStream Vector Baffle System Features Vector Air Flow Slots for low flow and high performance. Maintains uniform air flow thru the baffle system to bell shaped exhaust collar outlet.

High Efficiency sash management provides for energy savings.

User Protection with sash in lowered position, fumes are kept safely away from the user.

62" Sash Height for viewing of fume chamber, loading and unloading equipment for set up. Includes upper and lower sash. 82" Stand Up Height for ease of access and interior depths of 24", 30", and 42" available.

70" Viewing Height Double Vertical Sash provides ease of access for apparatus set-up in fume chamber. Sashes are perfectly counter balanced, 3/16 tempered safety glass, coated stainless steel cable with stainless steel pulley assembly. Framed in nonmetallic PVC framing, track, and aerodynamic sash lifts for ease of movement and air flow efficiency.

Angled Picture Frame Opening aerodynamic face opening with air foil provides uniform air flow into the fume chamber, & thru the Vector AireStream Baffle System, to the exhaust collar.

Energy Efficient vapor proof LED light fixture with polished stainless steel reflectors, and light switch on left column all factory installed.

Plumbing Services fixtures are color coded to specific service. (Optional equipment)

Electrical Services can be mounted on right or left side. (Optional equipment)

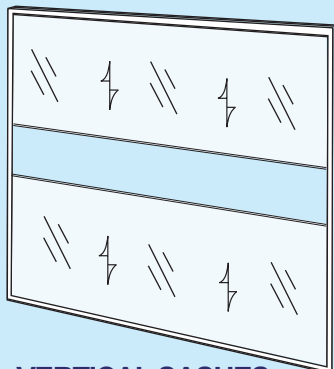


Air Flow Monitor (Optional equipment) continuously monitors face velocity air flow, meets ANSI and OSHA requirements.

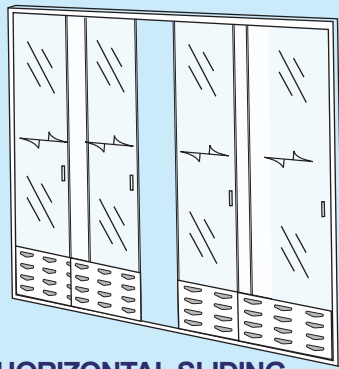
Cat. No. 51403

UniFlow SE FM Hood Cat. No. 11060
shown with Vector Air Flow Slots and optional dished epoxy resin work surface, & fixtures.

SASH OPTIONS



VERTICAL SASHES for HEMCO fume hoods, 4', 5', & 6' wide. The sash may be lifted to the completely open position for maximum access thru the fume chamber. Sash stops available.



HORIZONTAL SLIDING DOORS for HEMCO fume hoods, 8', 10', & 12' wide. The maximum sash opening for the horizontal sash is 1/2 that of the vertical sashes. The smaller opening, means less air exhausted resulting in energy savings.

UNIFLOW SE FM Floor Mount (Walk-In) Fume Hoods


UNIFLOW SE FLOOR MOUNT DESCRIPTIONS	Fume Hood Width "A"						
	HOOD Depth "B"	48" Cat.No.	60" Cat.No.	72" Cat.No.	96" Cat.No.	120" Cat.No.	144" Cat.No.
1. UniFlow SE Floor Mounted CAV Bypass Fume Hood with Vapor-Proof Light: Superstructure to be modular composite chemical resistant FRP non-metal construction. Interior fume chamber to be glass-smooth with Vector Aire Stream Baffle System & bell shaped exhaust collar. Picture frame upper & lower sash opening with counter balanced sashes of clear tempered safety glass with chemical resistant PVC framing, track, and aerodynamic sash lift. Vapor proof LED light fixture & control switch are wired to a single point junction box, 115/60Hz, AC. All electrical components are U.L. listed. Horizontal sliding doors optional on 96" & 120" hoods, consult factory.	30"	11040	11050	11060	11080	11100	11120
	36"	11042	11052	11062	11082	11102	11122
	48"	11043	11053	11063	11083	11103	11125
2. UniFlow SE Fume Hood with VAV: Same as # 1 above except equipped with vapor proof light fixture and VAV.	30"	11049	11059	11069	11089	11015	11031
	36"	11046	11056	11066	11086	11016	11032
	48"	11047	11057	11067	11087	11017	11033
3. UniFlow SE Fume Hood with Explosion-Proof Light: Same as # 1 above except equipped with explosion proof vapor tight light fixture. Class I Div II Group A B C & D, Class II Div II Group F & G, 115/230V, 50/60Hz U.L. listed Fixture is installed but must be field wired to local codes.	30"	11041	11051	11061	11081	11101	11121
	36"	11044	11054	11064	11084	11104	11126
	48"	11045	11055	11065	11085	11105	11127
4. UniFlow SE Fume Hood International Configuration: Same as #1 above except equipped to comply to international electrical configuration. 220V/50Hz AC. Optional international electrical configuration, electrical switches, receptacles and exhaust blowers available.	30"	11142	11152	11162	11182	11112	11128
	36"	11143	11153	11163	11183	11123	11129
	48"	11144	11154	11164	11184	11124	11130
5. Horizontal Sliding Doors (4 panels on 2 tracks) - for 96", 120" & 144" hoods only	FMHS-8	FMHS-10	FMHS-12				

Questions / Ready to order
Call 1-800-779-4362

- Optional Accessories**
- Plumbing Fixtures
 - Fume Hood Fire Extinguisher
 - Electrical Services
 - Air Flow Monitor

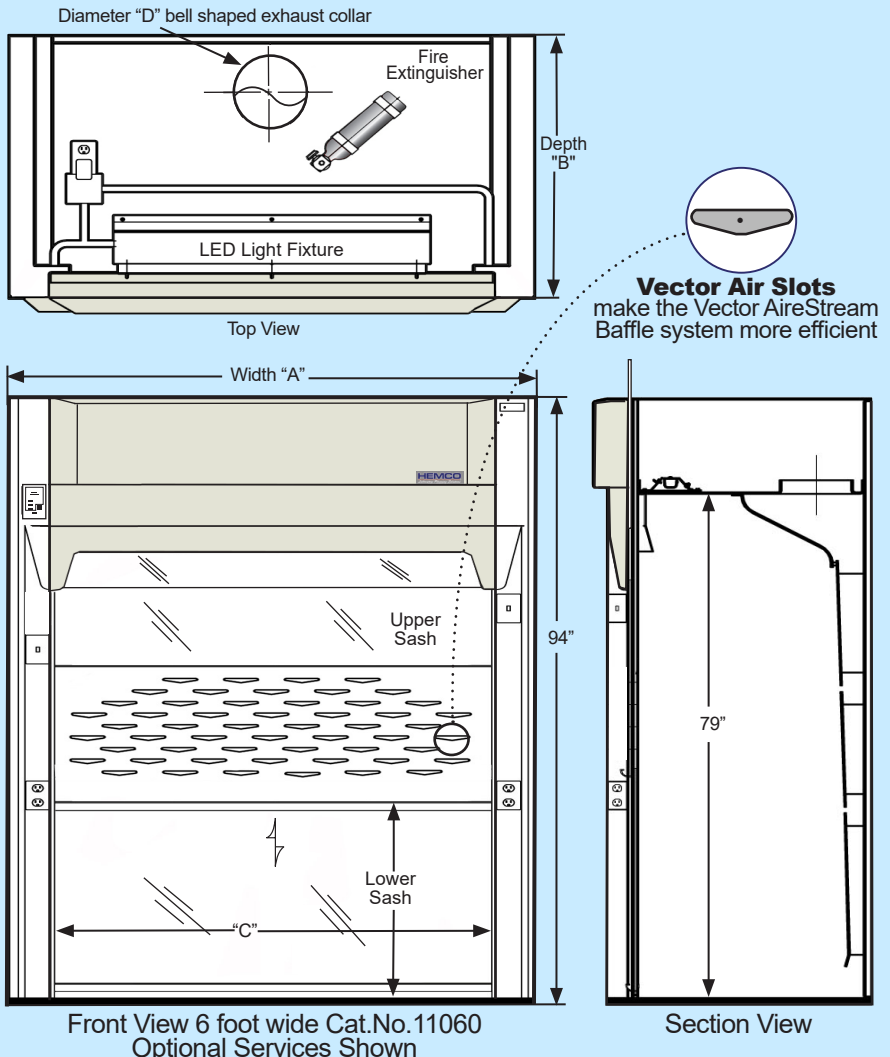
SE FM (Walk-In) Hood Dimensions

Width "A"	48"	60"	72"	96"	120"	144"
Width "C"	37"	49"	61"	85"	109"	133"
Diameter "D"	(1) 10"	(1) 10"	(1) 12"	(2) 10"	(2) 12"	(2) 12"

CAV Fume Hood Face Velocity 
The recommended face velocity for efficiency & safety is 80-100 FPM. Lower face velocity may compromise user safety. Sash in full open position should be for setup of apparatus & maintenance service only. Design opening is at 1/2 open at 100 FPM (feet per minute), face velocity at full open would be approximately 50 FPM.

SE FM Floor Mount Fume Hood Sash Management & Design

Size hood	48"	60"	72"	96"	120"	144"
1/2 open CFM	385	474	592	800	984	1200
Full open CFM	773	938	1162	1613	1968	2401



Front View 6 foot wide Cat.No.11060
Optional Services Shown

Section View